



STEELS CREEK COMMUNITY NOTES – Phoenix Edition No. 2 (November 2025)

'FIND OUT WHAT'S GOING ON IN THE VALLEY'

<http://steelscreek.vic.au/>

Welcome to the new Jolly Thing. This was a much loved newsletter for many years, and we are hoping to bring it back as a way of keeping the community informed about what is happening in the valley. Contributions for future newsletters always welcomed!

IN THIS EDITION:

Steels Creek groups and what they do. Plenty of room for more to join!

A bit of history

Meet some of the people of Steels Creek

Our low rainfall

News from Steels Creek Groups

If you see a group here that interest you, you're very welcome to join. If you don't see anything you like, why not start your own special interest or activity group?

Art Group (Contact: Ivan Filsell 0458 507 181)

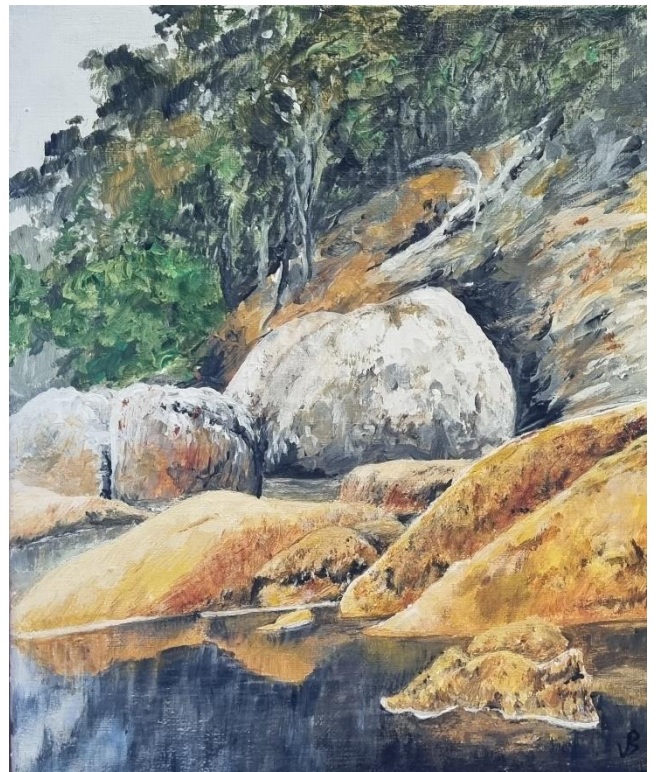
Art in Steels Creek is still thriving with attendance for Thursday afternoons holding at 7-10 regulars.

The art group has regular workshops with visiting artists and gallery visits throughout the year.

Thanks to Scott, local winery "Yileena Park" has been hosting the work of Steels Creek group of artists in their boutique tasting room at 271 Steels Creek Rd.. The artwork on display is changed about every two months. The work of artists Margaret McLoughlin, Vera Baddeley and Kaye Mcrae is currently on view.

Yileena Park is open Thurs to Sun 11am to 5pm, and is a very convivial spot for wine tastings, perhaps with a cheese platter or a charcuterie board and dips.

Please come in for a look and perhaps have a glass of wine and chat with Scott.



Vera Baddeley



Kaye Mcrae



Vera Baddeley

New members will be exposed to watercolour, pastels, pencil, acrylics, scratchboard ,liquid art and lino cut, and are welcome to bring something new.

New members are welcome, informal help and support always available at the Community Centre Thursdays 1.30-4.30pm.

Ring Ivan 0458 507 181 or Glenda 0407 369 144

Bookgroup (Contact: Mary Shiel 0418 426 530)



The book club has 11 members from Steels Creek and Yarra Glen. Some have been members for many years, although this year we also gained a few new members. We meet on the 3rd Tuesday of each month in the community centre for some lively discussion, a cuppa and some cake.

The library selects and provides books each month, and we receive a wide range of books, covering both fiction and non fiction. While authors of the books we read cover a variety of nationalities, this year there has been a strong focus on Australian writers.

We finish each year with lunch at a local restaurant. Any potential new members are welcome to join this end of year lunch, this year held on Tuesday 18th November. Any enquiries please contact Mary Shiel.

Exchange Hub

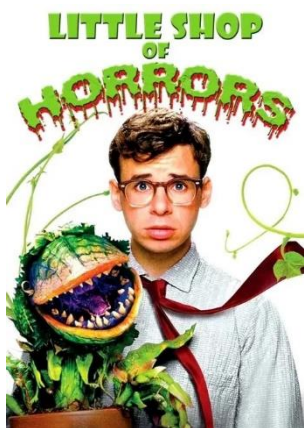


The Exchange Hub meet twice a month from 10-11am on the second and fourth Saturday of each month. Upcoming dates are the 8th and the 22nd November. Attendees ranged from 10-20 each time with old and new, young and older community members enjoying conversation and trading fresh garden produce, along with coffee and scones.

Saturday working bees continue each month for the hour before the hub, and workers reward themselves with a cuppa and scone, expanding the numbers and fun.

The next Busy Bee is the 22nd November starting at 9am. There is always plenty to do - the picnic tables are in need of a re-vamp, pruning, weeding, trimming, blocking rabbits holes, rock edging – there are plenty of jobs both large and small, to be tackled so all welcome to join in the fun.

Film Club (Contact: Keith Montell 5965 2202)



Dinner and movie in our Gold Class venue (Steels Creek Community Centre). Guaranteed laughs; suspense; and drama together with fine food and good company. DINNER FROM 6pm – FILM STARTS 7.30pm

The film club has had 10 showings during the year with an average attendance of 20, which has raised approximately \$700 for the Community Centre. A mixture of movies have been shown and they are usually very well received. The evenings are very well catered for, usually by chef extraordinaire Angie Lloyd, supplemented by other attendees.



Community members enjoying dinner before the movie

The most recent movie - Little Shop of Horrors – was selected as being eminently appropriate for its screening on the night of Halloween.

Everyone is welcome to all screenings.

Keep an eye on the Grapevine for dates, or go to the [What's On Calendar](https://steelscreek.vic.au/noticeboard/calendar-of-events) (steelscreek.vic.au/noticeboard/calendar-of-events).

Cost: A Bargain. Only \$10 for dinner and movie (or free to those helping to supply the meal) plus \$5 for the centre

Garden Club (Contact: Delia West 042 040 909)



The garden club continues to thrive, with regular propagation sessions at the centre and monthly visits to various gardens or nurseries, mainly in the local area. The membership remains fairly steady at around 50 members.

The club did have an active Facebook page which was recently deleted, presumably during Facebook's update. Emails requesting it to be 'returned' met with no response so we have had to start again.

The Garden Club organised a Big Morning Tea on 27th May, with all funds raised supporting cancer services. It also recently had its very successful annual plant fair.

The Garden Club has made the decision to relocate to the Yarra Glen Living and Learning Centre, as many of its current members are from Yara Glen. We wish them all the best in their new home. You can see on P7 of this edition a short history of the Garden Club.

Iris grown from bulb purchased at the annual flower show 2024

Stitchers (Contact: Julie Wilcox 0407 311 584)



Stitchers has had a good year continuing our enjoyment of different craft activities including quilting, knitting, crochet, cross stitch and spinning. The members all enjoy experiencing new crafts and sharing our achievements.

The group is very active in supporting various charities.

One project is knitting penguin coats to save fairy penguins caught in oil spills where their natural insulation is stripped due to removal of the oil.

Stitchers have continued to craft and donate quilts/blankets to aged care and women's shelter along with providing a lovely quilt for the raffle for the Big Morning Tea, which was very well received.

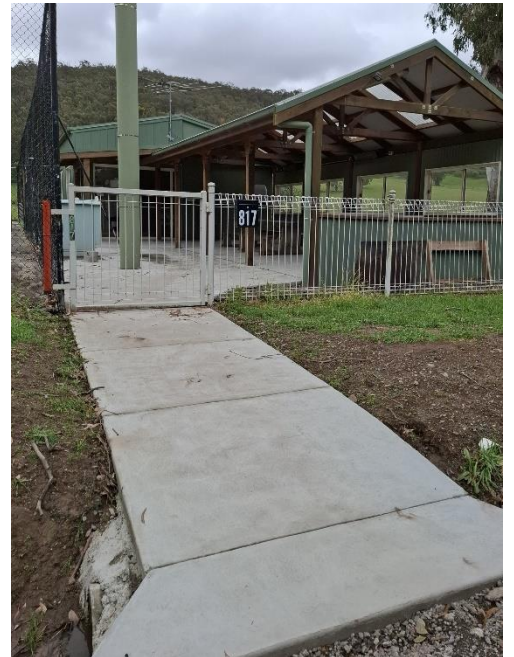
The group has also recently contributed doll mattresses, blankets, pillows and quilts to go with cradles donated by the Yarra Glen Men's Shed to the Salvation Army. Although this was an initial collaboration, it garnered a positive response.

We love to welcome new members and enjoy a variety of crafts and activities including knitting, crochet, quilting and patchwork. Love to see you there on a Tuesday afternoon.

Steels Creek Tennis and Social Club (Contact: Graham Lloyd 0430 243 442)

The Steels Creek Tennis and Social Club have been busy making improvements, have you noticed?

We now have concrete from the court entrance gate and clubhouse entrances through the BBQ area to the front fence and a gentle path to the road. This major upgrade provides all abilities access to facilities, improves drainage in the outdoor area and reduces dirt transfer to the courts and clubhouse, providing an improved experience for all using the facilities. Two outdoor heaters have also been installed so we can extend the months the outside seating area can be enjoyed. SCT&SC is a relaxed group that welcomes players at all levels. Whether you are new to tennis or an old hand all are welcome and annual membership for adult players is just \$45 per year. If you no longer play or tennis is not your thing we also have monthly family socials, where you can get together with your fellow Skreekians. Social membership is just \$10 per year for adults.



Organised court times

Monday 9am, Ladies social tennis. Approx 90 minutes of play followed by morning tea

Thursday 7.30pm, Mixed social tennis with lots of laughs

Sunday 2pm, Mixed social tennis enjoying sunshine and exercise

Saturday mornings, Yarra Glen juniors regularly use the courts for fixtures

Members are welcome to use the courts at other daylight times.

Save the date

The Tennis Club Family Christmas Social is 6pm, Friday 19 December. Join in a fun evening of socialising and a hearty sing-along. Courts are available for those wanting to have a hit. More details in the Grapevine closer to the date.

To join, see [Steels Creek Tennis Club](#) for all membership details and membership application form.

Steels Creek Landcare Group



Our purpose is to support our members efforts to care for their land and the surrounding area.

SCLG is part of the Northern Yarra Landcare Network (NYLN), which includes Steels Creek, Dixons Creek, and Chum Creek. The network benefits from part-time facilitation by Rob Fallon, whose support has been instrumental in coordinating efforts across the region. SCLG is currently focused on two major initiatives:

- 🌿 **Partnership Against Pests (PAP):** This program is a key initiative aimed at reducing feral deer populations across the Steels Creek Valley and the broader Northern Yarra Landcare Network. Feral deer are emerging as one of Australia's most serious environmental and agricultural threats across the nation. Victoria has the largest deer population in Australia, estimated at more than a million animals and forecast to double every 2 years. SCLG collaborates with private property owners, Chum Creek and Dixons Creek Landcare Groups, Yarra Ranges Council and professional cullers and relevant agencies. Together, they work to facilitate effective and responsible deer reduction, addressing the significant damage caused to agriculture, private property, and road safety. These efforts also align with national strategies to reduce feral deer numbers.

There is a local dedicated WhatsApp group which enables participating culling program residents to report deer sightings in real time, including:

- Time and location
- Number and type of deer
- Direction of movement

- 🌿 **Steels Creek Sub-Catchment Plan:** This initiative aims to improve the ecological health of Steels Creek and enhance biodiversity across the valley, with a focus on high-impact zones along a 10.7 km stretch of the creek. Key facts you may not know:

- The Steels Creek Valley spans 6,200 hectares, with 57% private property and 43% National Park
- Steels Creek itself runs 17.6 km to the Yarra River
- Steels Creek is fed by 11 major tributaries and hundreds of headwater streams and gullies

In addition, SCLG has launched a comprehensive website for members, featuring resources on:

- 🌿 Bushfire Planning
- 🌿 Flora and Fauna
- 🌿 Pest Animal Management
- 🌿 Solar Savers (webinar series)

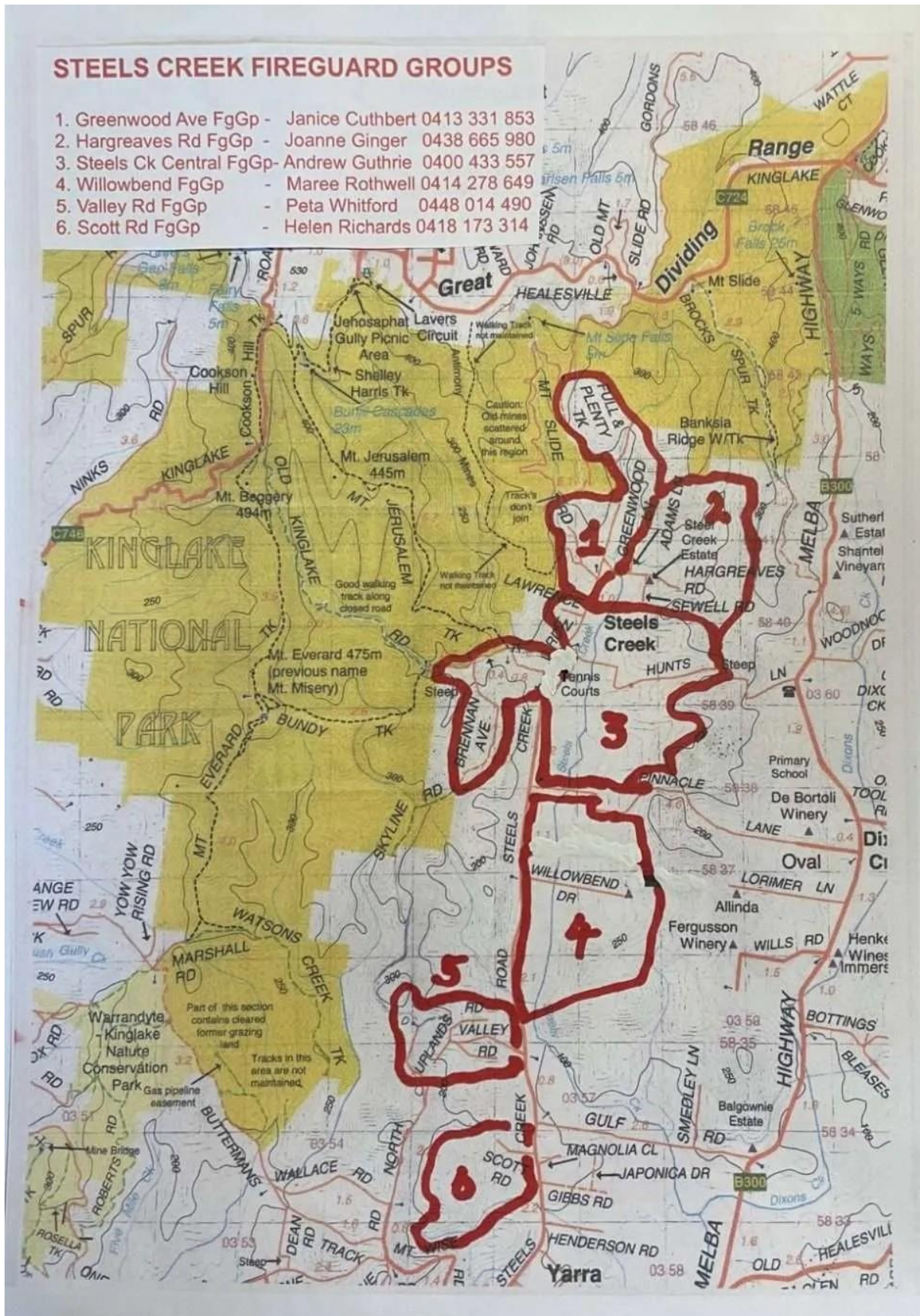
Further, as a member of Landcare you can obtain free access to a range of equipment including a wood splitter and spray equipment.

Contact: Andrew Guthrie (President) 0400 433 557 or Bruce Kellet (Secretary) 0447 551 215
email steelscreeklndcare@gmail.com

Community Fireguard

Fireguard is the CFA's bushfire safety program. As we come into the fire season this is a reminder to connect with your neighbours to ensure all are on the relevant fire tree Whats App groups.

The map shows where each fireguard group is and the contact details for each co-ordinator.



A Short History Of The Garden Club

By Jill Hess

The Steels Creek Garden Club was established 34 years ago in October 1991 by Jane Bean and Jane Calder. The first newsletter and committee of 6 followed in 1993 with a membership of 30 enthusiastic gardeners. Plans were made to set up a community garden at the Steels Creek Community Centre. In May 1994 a shire sign went up saying that the Steels Creek school was officially renamed as the Steels Creek Community Centre, so work at the centre was stepped up.



Garden club meetings were held at members homes, while outings headed off from the centre using car pools with additional pick ups in King St. a calendar set out the years events, and outings included nurseries, private gardens, parks and flower shows. The club now meets at the Yarra Glen park before outings, while propagating once a month in order to provide plants for the annual flower show brings members together to share their passions and ideas. The garden club also has a very special event in May each year to support the Cancer Councils' The Longest Morning Tea.

Heads down, tails up!



Flower show 2003

Over the years the Garden Club has seen many changes. People move on for a variety of reasons, especially after the fires and covid. A major change is the relocation to the Living and Learning centre in Yarra Glen in 2026, which will be a more central spot for many of the current members. Over the years we have been very fortunate to have support from the Steels Creek Committee and the community in so many ways. The Centre will always have our support in return.

Those Magnificent Cars

By Keith Montell

You may have noticed that on any given Tuesday that there are several Classic and Vintage cars travelling along Steels Creek road and through Yarra Glen. These vehicles driven by members of "The League of Gentlemen" are heading to Yarrowood Winery for coffee and a mandatory scone with jam and cream.

Although definitely not a Gentleman I have been given honorary status as I join these chaps, in my Vintage Morris, in a lineup of several magnificent old cars including Armstrong Siddeley; Alvis: MG; Bristol; AC Cobra; AC Social and several older BMWs and Mercedes. This display receives great interest from, and gives pleasure to, visitors to Yarrowood.



Keith with his splendid Morris Oxford 1933. Only 2000 of these cars were made worldwide, 6 of them in Adelaide, with this being the only one known to still be in existence.

That Bridge! And Why It's There



The red-brick arched heritage bridge over the Maroondah Aqueduct before recent road works (Photo from transport.vic.gov.au website)

protected, regarded as being historically significant as part of Melbourne's early water infrastructure.

Melbourne's first public water supply came from a 150,000 gallon (approximately 682,000 litres) cast iron tank mounted on a bluestone base, on the corner of Albert and Gisborne Streets, East Melbourne (Eastern Hill). It first held water pumped from the Yarra River, and after 1857/1858, water from Yan Yean.

The first major water supply to Melbourne was created by building an embankment across the outlet of Yan Yean swamp, thus creating a water storage reservoir at Yan Yean. The reservoir was filled by a 2 mile long aqueduct from the Plenty River. As the storage was at a higher level than Melbourne, water was then piped to Melbourne using only gravity feed. Construction began in December 1853 and water flowed from the system in December 1857.

The Yan Yean scheme was described as both visionary and controversial as few cities in the world at the time had such an innovative and extensive water supply system. The system demonstrated that large cities could be effectively fed water by gravity rather than by steam pump, and other cities in the world soon started to do the same type of thing.

However, Melbourne continued to grow rapidly (nothing ever changes!). It had become one of the fastest-growing and wealthiest cities in the world. By 1875 Melbourne's population was 250,000 and 45,000 houses were connected to mains water. It became a constant challenge to keep up an adequate water supply.

A number of reservoirs were completed during the 1880's and in 1886 the idea of the Maroondah scheme was developed. This involved the creation of a major new storage and diversion of the Watts River by a series of open channels/aqueducts from the Watts River near Healesville to Preston Reservoir, some 41 miles (66 kilometres) away.

Built by the Board of Works, with work beginning in 1886, it is the oldest remaining aqueduct near Melbourne and was probably the first built with concrete. It really was a remarkable feat of engineering. It was built without machinery, using only horse and manpower, and had a fall of only "a foot to the mile" (0.19 m to the kilometre), a very small grade.

You will all be aware of the closure in September of the bridge near Yarra Glen on the Yarra Glen Eltham Road. The closure was to allow for works to strengthen the bridge, and was obviously very inconvenient for the drivers of the approximately 5,500 vehicles that travel over it every day.

Fortunately the closure was relatively short, but have you ever thought about the history of the bridge and the aqueduct it passes over?

The bridge goes over the Maroondah Aqueduct, and was built between the late 1800s and early 1900s. Both the bridge and the aqueduct are heritage listed and

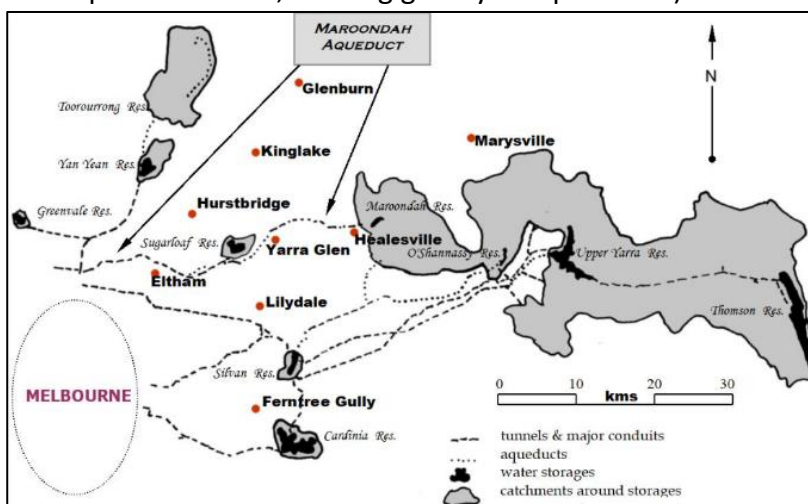
When the aqueduct was first under construction, the railway was just in the process of being built and came only as far as Yering, not reaching Yarra Glen until 1888 (and closed in 1980). That meant that all the cement and screenings came by train as far as Yering station and was then transported across the flats by horse and dray, then across the river by boat. They then had another set of horses and drays on the Yarra Glen side of the river to complete the shuttle up the side of the hill to where they were digging out the channel.

It was officially opened on 18 February 1891 by His Excellency the State Governor, Lord Hopetoun.



Official opening of Maroondah system 1891

The aqueduct initially gravity fed around 25 million gallons (approximately 114 million litres) of water a day to Melbourne. It originally carried water over 41 miles (66 km) from the Maroondah Reservoir on the Watts River at Healesville to the Preston Reservoir. 41 km was open channel (a mix of cement-concrete and brickwork in cement), 10 km was tunnelled through hills, and 15 km was in 14 inverted siphons across stream valleys. (Inverted siphons are engineering structures used to transport fluids across valleys or obstacles. They work by forcing the fluid downward through a pipe, gaining velocity, and then back up to the outlet, utilizing gravity and pressure.)



The present Maroondah Reservoir was completed in 1927 and the aqueduct was enlarged at that time to take increased flows. This involved increasing the height of the channel and doubling the pipes throughout. The sections of pipes for the second pipeline came up by rail to the Yarra Glen station. They were unloaded there, then carted out to the job, one pipe at a time, on a six-horse wagon.

In the 1970s, the Sugarloaf Reservoir was constructed, inundating 445 hectares of land in Christmas Hills. Sugarloaf was officially opened in 1980 and serves as a water storage and treatment plant supplying Melbourne

A number of other reservoirs, aqueducts and pipelines have been built to provide Melbourne with increasing amounts of water, but only Sugarloaf is now directly connected to the Maroondah aqueduct.

Much of this information is from [Water for Melbourne - THE HEROES OF THE AQUEDUCT](#), supplemented by a publication from the Yarra Glen and District Historical Society - "Along The Length" by Fred Sadlier, Former M&MBW Caretaker of Yarra Glen Lower length

Introducing

Who's New In The Valley?

Meet the Rickard Family

Did someone say cheese?

Samantha Rickard was keen to make cheese using milk from her own cows. She took this further than many people might, first buying land to accommodate some cows, then finding someone who could mentor her and teach her how to best manage her cows and milking, then purchasing her first cows - Bambi and her foster calf Belinda, undertaking cheesemaking courses, and finally, producing her own cheese! (cheddar, fetta, brie, havarti). You could say where there's a will there's a whey.

Samantha, along with her husband Dave, their daughter Vanessa, and their 3 dogs, Minnie, Pretzel and Milo moved to Steels Creek early this year. They had lived in Croydon for 30 years, and always loved this area. With their 3 older children having grown and left home, they felt the time was right for them to move where they would have more land and space to pursue their interests. Because they had lived in Croydon for so long they had strong community ties there, and Steels Creek is close enough for them to continue those relationships, as well as forging new ones in their new home. They found the perfect block of land in Steels Creek – part pasture so Sam can have the cows and goats she's always wanted, and part bush where Dave enjoys riding his motor bike.

"We feel quite blessed. The views are beautiful. ... it's quiet and peaceful but not isolated. We're only a few minutes to town."

Both Samantha and Dave have some agricultural background. Both grew up in New Guinea, which is where they met, and were used to having animals including cattle, horses and chooks around. They are keen on expanding the agricultural side of the property, but taking things slowly as they learn what works on their property.

For example, it is much windier in Steels Creek than in the sheltered suburbs, and they didn't have to contend with kangaroos and other wild animals, and this affects what vegetables and trees they plant and where they plant them.

Samantha already had a large vegetable garden in Croydon, and has been able to expand this in Steels Creek, along with planting fruit trees. She has also extended her flock of chooks, with a variety of different types including Isa Brown, and heritage breeds Sussex and Araucana, producing her "rainbow" eggs – a very appealing selection of white, brown, pink, blue and green.



They have a lot of plans for the future, with Samantha keen to get some goats, but first need to build appropriate fencing and shelter. She is also keen on rehabilitating the pasture, and has been doing a lot of research on how to do this with less chemical input. They have joined Landcare and borrowed the woodchipper to produce enough mulch to cover their garden.

The family is very happy they made the decision to move to Steels Creek. They love the peace and the views, and enjoy sharing it with friends, who often come up on a weekend to camp on the property (the house being smaller than what they had in Croydon).

"It had beautiful gardens that are no longer here... When we moved here we got a letter from the original family who were here, and it was nice to hear that it was a very cherished place. ... we hope to restore it to that."

Local businesses

Steels Creek and surrounds has many lovely little businesses. Introducing one of them today.

Yarra Valley Garden Supplies



This business has been operating out of Yarra Glen for many years, but now has a new owner in Emmanuel Konstandinou. Emmanuel is no stranger to the area, having operated a landscaping business from Dixons Creek for a number of years before taking over the garden supplies business.

Emmanuel is very keen to build the business up, and encourage locals to shop there rather than going further afield. To that end he is currently working 7 days a week, open each weekday 7am to 5.30pm and 8am to 3pm on weekends, and is working hard to build up relationships with both local businesses and individual customers. He has for example, visited all the local wineries to establish what their needs are.

In the 4 months he has owned the business, he has been steadily expanding the range to include landscaping products – rocks, soil and mulch; firewood, gardening tools, lawn seeds, pot plants and garden ornaments, and has plans to introduce a limited range of plants and seeds. Amongst the core product range of mulches, sands, compost, toppings and rocks he has expanded the range from 24 products when he took over the business, to 64 products, and increasing. Through his various trade contacts he can also help with work required, such as for example, arranging seeding of new lawns.



Emmanuel has been an enthusiastic supporter of the Steels Creek Community Centre, proving free mulch for the garden and donating a voucher for the Landcare raffle.

Our Local Wildlife – Wombats! (and a kangaroo)

By Lindy Montell

Although not everyone's favourite native animal, we have always loved watching wombats wandering around our property. For the last few months we have come to enjoy daily visits from this family of three.

Initially, however, they caused us not only consternation but a considerable amount of hard work.



This was a result of the drought we are currently experiencing. Lack of their usual fodder had caused the wombats to help themselves from our hay shed, creating a considerable mess. It took us time and ingenuity to come up with the means to secure the hay - but after several attempts we succeeded. Wombats are far stronger than we had ever imagined and between them managed to dislodge the heavy gates and substantial obstacles we had placed around the stacks of hay. The little one even squeezed through the bars of the gates until it grew too fat!



In the end it was difficult to deny them altogether - hence their daily supplement - at least until the drought ceases and the grass regrows!

Wombats are not the only visitors. A kangaroo as seen from the lounge room window.

About the Steels Creek Community Centre



The community centre is for you! It is an important gathering place for all Screekians. The Community centre Committee is responsible for the management and maintenance of the centre, which is leased from the Shire of Yarra Ranges. The centre is predominantly funded by users, who pay a small fee when attending the centre. The committee also fundraises and seeks community grants and donations, in addition to acting as a co-ordinator of the many groups and users of the centre.

An easy way to support the Steels Creek Community Centre

Did you know you can help your community by shopping at IGA / Ritchies?

You can get a Community Benefit card at the store, or download the app, and link your card to the Steels Creek Community Centre.

Scan your card every time you shop at any Ritchies (displaying the Ritchies Card promotional material), and they will donate money back to the centre.

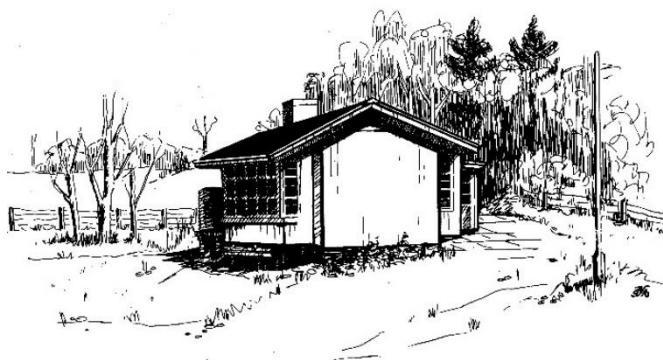
As of the end of October 2025, the Steels Creek Community Centre has received a total of \$4929.63 from this program.



Who Started the Community Centre?

By Ivan Filsell

The Steels Creek Community Centre was originally Primary School 2725, first opened on the 25th June 1886 in a portable classroom. Edward Morris, the first teacher at the school built a family home in the school grounds and established an extensive garden. He taught at the school until his retirement in 1922.



The original building burnt down in 1943, with no reason for the fire starting ever being definitively established. While a new school was being built, classes were conducted in the Anglican Church which at that time was next door to the school. The school was rebuilt, with an opening ceremony and reunion held in 1946. The cost of the new building was very precisely recorded at eight hundred pounds, fourteen shillings and three pence.

The school became a victim of progress with sealed roads, modern cars and a bigger newer school in Yarra Glen all contributing to a reduced student base.

In 1974 numbers were down to a new low of 7 which was below the minimum of 10 and the school was scheduled to close. The arrival of the Filsell family with 3 school age children, quickly followed by the Mccrea family with 2 more avoided closure. Numbers increased slowly through the 70's to a maximum of about 27 before once again going into decline in the 80's. The final blow came with the Kennett government putting the minimum number of children up to 20. The school was closed but this was not the end of the story as a group of local residents campaigned hard for the school facilities to be retained as a community centre. In December 1992, after a lot of hard work, the group, gained the support of our local MP and the Shire of Healesville to procure the centre for the community.

Having a Community Centre has provided a welcoming space for people to meet for various special interests and has led to the formation of many groups including the art group, book club, garden group, stitchers and Landcare. The centre is also open for hire for children's parties, anniversaries and similar celebrations.



Since its foundation the centre has been a hive of activity, interrupted only by severe damage in the 2009 Black Saturday Bushfire. (*Editors note: Ivan didn't mention this in his article, but the Filsell family played a significant role in saving the centre during the 2009 bushfires.*)

But the Phoenix rose again to be bigger and better than before. The building was extended in 2012, and an outside play area was included.

The Steels Creek Community Centre Action Committee, who worked hard to retain the school building for the community, plus guests.

L-R John McSrthur (Ed. Dept.), Fred Lyons, Malcolm Calder, Bronwyn Dahlstrom, Andre Haemoyer (MP), Vera Adams, Rowan Perkins (Healesville Shire), Rex Bean, Hannah Sky

Having a party?

Have you thought about using your Community Centre for a function or event? Great venue – lots of room, kitchen and barbecue facilities, children’s play area.

You can book online. Simply:

- ✿ Open the Steels Creek Community web-site (go to www.steelscreek.vic.au).
- ✿ Select the **SCCC** tab.
- ✿ Scroll down the page to find, ‘Do you want to book the Centre for a function/event?’
- ✿ Click on, ‘Check availability and make an on-line booking enquiry here.’
- ✿ Follow prompts for information, charges and to make a booking request.

You will receive an acknowledgement of your request and further confirmation when the booking is confirmed. Any queries, contact Maree Rothwell 0414 278 649.

Steels Creek Calendar

Check [What’s On Calendar](http://steelscreek.vic.au/noticeboard/calendar-of-events) (steelscreek.vic.au/noticeboard/calendar-of-events) for latest updates to the calendar.

November 2025						
Monday	Tuesday	Wednesday	Thursday	Friday	Saturday	Sunday
					1 Tennis Regular Competitions 1:00 pm - 5:00 pm	2 Sunday Afternoon Social Tennis 2:00 pm - 5:00 pm
3 Ladies Social Tennis 9:00 am - 10:30 am	4 STITCHERS Group 1:30 pm - 4:00 pm	5 WOMEN'S GROUP - Evening Friendship Group 6:30 pm - 8:30 pm	6 Art Group 1:30 pm - 4:30 pm	7	8 Steels Creek Exchange Hub 10:00 am - 10:30 am Tennis Regular Competitions 1:00 pm - 5:00 pm	9 Sunday Afternoon Social Tennis 2:00 pm - 5:00 pm
10 Ladies Social Tennis 9:00 am - 10:30 am	11 STITCHERS Group 1:30 pm - 4:00 pm	12	13 Art Group 1:30 pm - 4:30 pm	14	15 Tennis Regular Competitions 1:00 pm - 5:00 pm	16 Sunday Afternoon Social Tennis 2:00 pm - 5:00 pm
17 Ladies Social Tennis 9:00 am - 10:30 am	18 STITCHERS Group 1:30 pm - 4:00 pm Book Group 7:30 pm - 9:00 pm	19	20 Art Group 1:30 pm - 4:30 pm	21	22 Busy Bee 9:00 am - 10:00 am Steels Creek Exchange Hub 10:00 am - 10:30 am Tennis Regular Competitions 1:00 pm - 5:00 pm	23 Sunday Afternoon Social Tennis 2:00 pm - 5:00 pm
24 Ladies Social Tennis 9:00 am - 10:30 am	25 Garden Club Growing Group 9:30 am - 11:00 am STITCHERS Group 1:30 pm - 4:00 pm	26	27 Art Group 1:30 pm - 4:30 pm	28	29 Tennis Regular Competitions 1:00 pm - 5:00 pm	30 Sunday Afternoon Social Tennis 2:00 pm - 5:00 pm

Categories ■ Community Centre ■ Events ■ General ■ Tennis Club

Rainfall Report

It has been a dry year, with many months well below average rainfall.

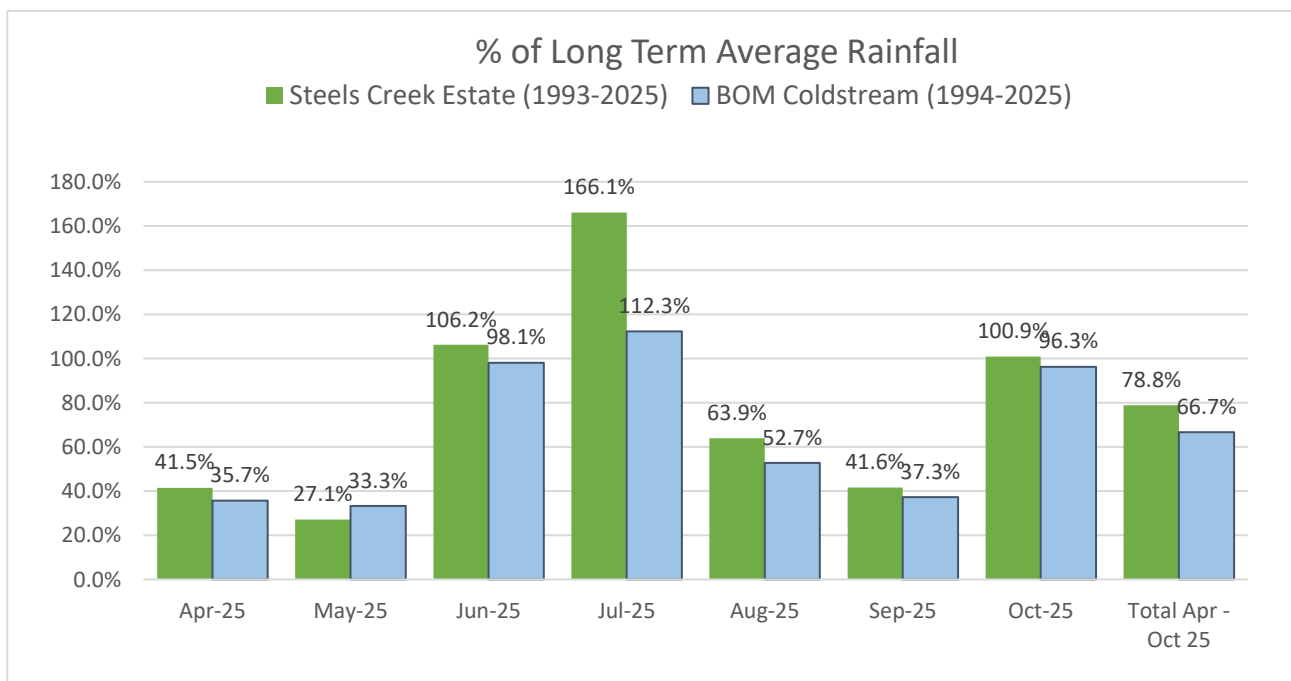
October was fairly dry until that last Sunday of the month (26th October) with very heavy rainfall recorded across the valley at rates of up to 288mm/hr.

Monthly rainfall is shown below for various areas across the valley, and for Coldstream. Interesting how much it can vary in short distances.

	Brennan Avenue (mm)	Dixons Creek CFA	Steels Creek Estate Sewell Rd (mm)	Steels Creek Estate Sewell Rd long term average 1993-2025 (mm)	Bureau Meteorology Coldstream (mm)	Coldstream long term average 1994-2025 (mm)
April 25	24.8	28.8	28.5	68.7	23.4	65.6
May 25	21.8	17.6	19.1	70.4	22.0	66.1
June 25	65.4	65.6	80.0	75.3	66.0	67.3
July 25	112.2	87.8	122.5	73.7	70.4	62.7
Aug 25	38.2	41.6	52.8	82.6	36.8	69.8
Sep 25	25.8	8.0	32.5	78.1	25.4	68.1
Oct 25	92.6	89.4	83.5	82.8	72.6	75.4

The Bureau of Meteorology provides long term data from its station in Coldstream, which is the closest station to Steels Creek.

We are also fortunate to have access to long term rainfall records kept by Steels Creek Estate in Sewell Rd. The data from these 2 sites is used in the graph below, showing monthly rainfall this year compared to the long term average rainfall for each month. You can see April, May, August and September were particularly dry compared with average levels of rainfall.



The Steels Creek Grapevine

Want to be kept up to date on Local Steels Creek events and offerings? Let us know and we will put you on the email list for the ***'The Steels Creek Grape Vine'*** so you don't miss out. The Grapevine is emailed every second week.

Email thegrapevine@steelscreek.vic.au or

<http://steelscreek.vic.au/publications/the-steels-creek-grapevine/>

"The Jolly Thing" is published by and for the Steels Creek Community Centre Inc. (SCCC), 699 Steels Creek Road, Steels Creek.

Management Committee: **Kerry Guthrie**, President; **Maree Rothwell**, Vice-president; **Craig Irvine**, Treasurer; **Julie Wilcox**, Secretary; Ivan Filsell, Art Group representative; Mary Shiel, Bookclub rep; Fiona Martin, exchange hub rep; Peta Whitford, Landcare rep; Mark Newell, Tennis and Social Club rep.

The Jolly Thing is distributed at the Yarra Glen Post Office, Steels Creek Community Centre, the Yarra Glen Reading Room and Hoogies; via the website, and by email.

We thank our ongoing sponsors of the community centre – Hoogies, Yarra Glen Automotive and Yarra Valley Garden Supplies.

We gratefully acknowledge Cindy McLeish MP for her support to the Steels Creek Community and The Jolly Thing.

Printed by Cindy McLeish MP, State Member for Eildon